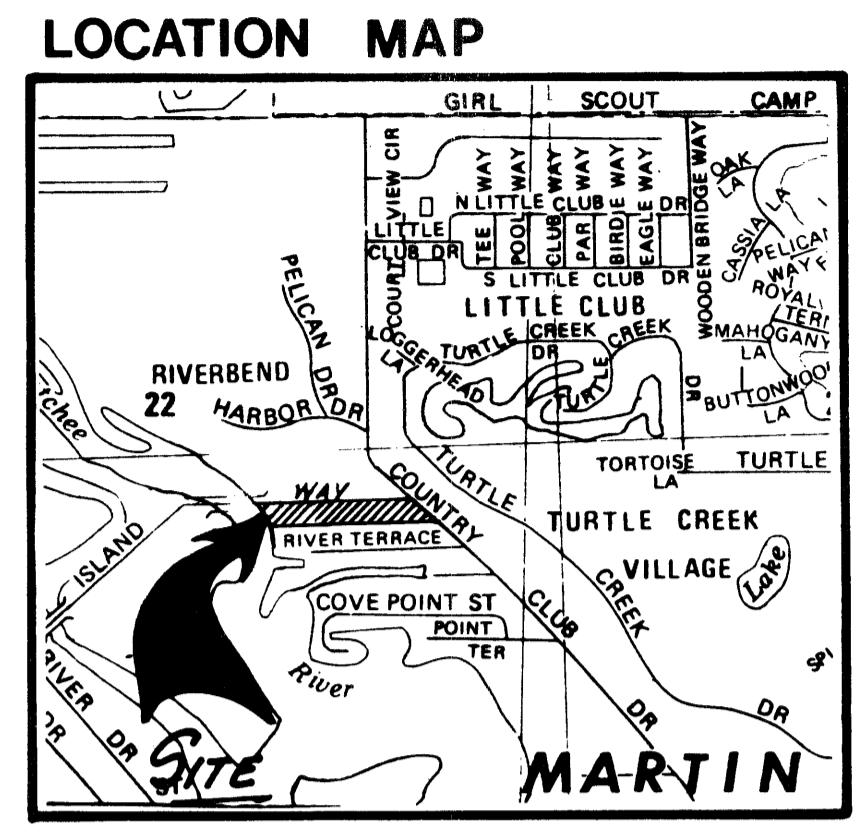
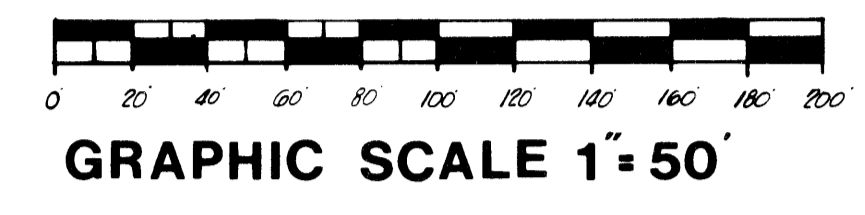


# ISLANDWAY ESTATES

A SUBDIVISION IN SECTION 22, TOWNSHIP 40 SOUTH,  
RANGE 42 EAST, MARTIN COUNTY, FLORIDA

FEBRUARY 1984

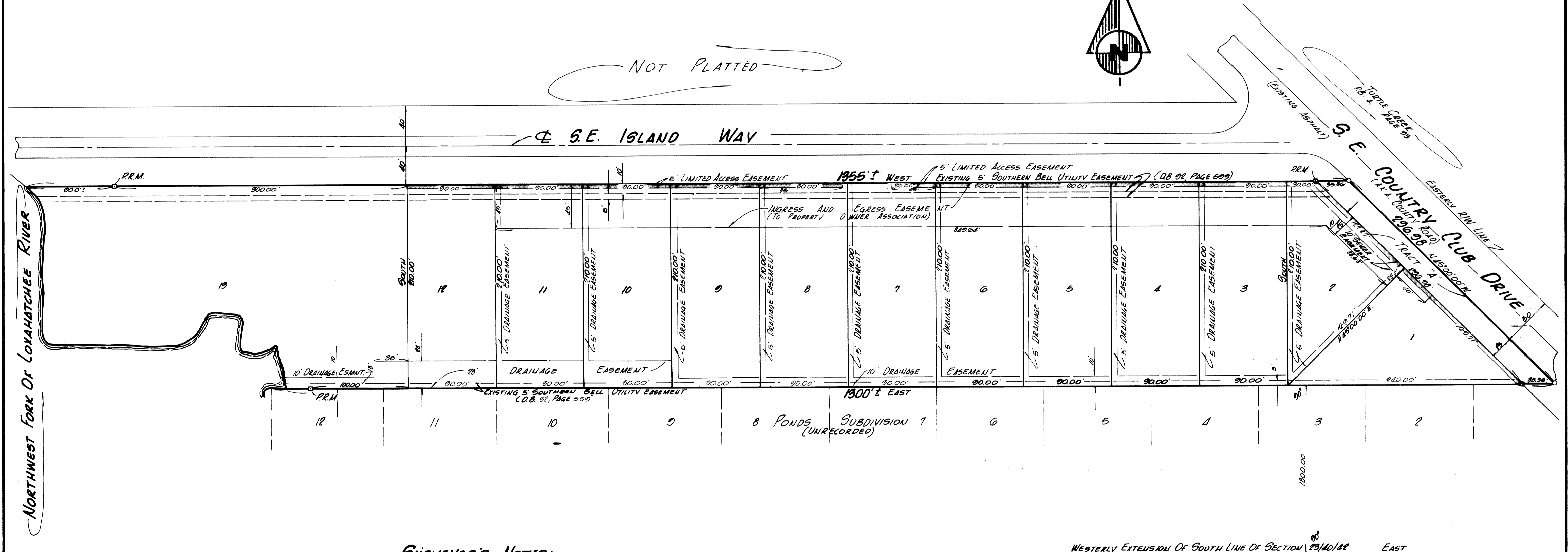
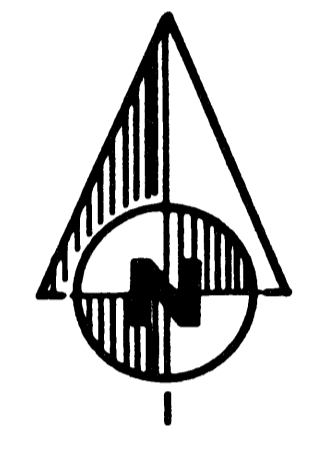


I, LOUISE V. ISAACS, CLERK OF THE CIRCUIT COURT OF MARTIN COUNTY, FLORIDA, HEREBY CERTIFY THAT THIS PLAT WAS FILED FOR RECORD IN PLAT BOOK 9, PAGE 62, MARTIN COUNTY, FLORIDA, PUBLIC RECORDS, THIS DAY OF \_\_\_\_\_, 19\_\_\_\_.

LOUISE V. ISAACS, CLERK  
CIRCUIT COURT  
MARTIN COUNTY, FLORIDA

FILE NO. \_\_\_\_\_ BY: \_\_\_\_\_  
DEPUTY CLERK

NOT PLATTED



**SURVEYOR'S NOTES:**

—□— DENOTES PERMANENT REFERENCE MONUMENT.

BEARINGS SHOWN HEREON ARE BASED ON AN ASSUMED BEARING OF DUE EAST ALONG THE WESTERLY EXTENSION OF THE SOUTH LINE OF SECTION 23, TOWNSHIP 40 SOUTH, RANGE 42 EAST.

□ = DENOTES LIMITED ACCESS EASEMENT (DIRECT VEHICULAR ACCESS TO INDIVIDUAL LOTS ACROSS THE LIMITED ACCESS EASEMENT IS HEREBY PROHIBITED)

WESTERLY EXTENSION OF SOUTH LINE OF SECTION 23/40/82 EAST